

S243



Materials

Stationary - Car / SiC / SSiC / TC

Rotary - SiC / SSiC / TC

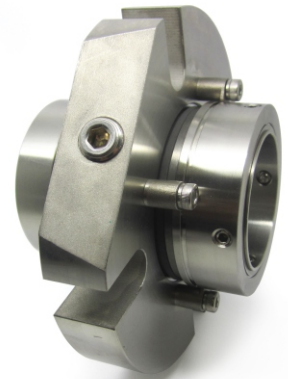
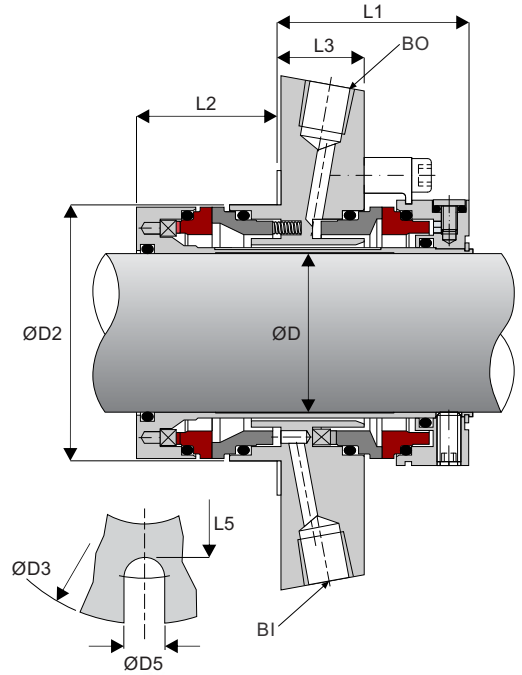
Elastomer - NBR / EPDM / Viton / Aflas / FFKM

Working Conditions

Pressure < 28 bar

Speed < 35 m/s

Temperature up to 205°C (Elastomer Dependant)



Shaft ØD		ØD2	ØD3	ØD5	L1	L2	L3	L5
Imperial	Metric							
1.000	24	49.7	115	12.5	50	35.0	22.5	67
	25	49.7	115	12.5	50	35.0	22.5	67
1.125	28	52.7	115	12.5	50	35.0	22.5	67
-	30	54.7	115	12.5	50	35.0	22.5	67
1.250	32	57.7	130	14.7	50	35.0	22.5	75
	33	57.7	130	14.7	50	35.0	22.5	75
1.375	35	59.7	130	14.7	50	35.0	22.5	75
1.500	38	62.7	140	14.7	50	35.0	22.5	82
-	40	64.7	140	14.7	50	35.0	22.5	82
1.625	42	66.7	140	14.7	50	35.0	22.5	82
-	43	67.7	140	14.7	50	35.0	22.5	82
1.750	45	69.7	140	14.7	50	35.0	22.5	82
1.875	48	72.7	150	17.5	50	35.0	22.5	92
2.000	50	74.7	150	17.5	50	35.0	22.5	92
2.125	53	77.7	150	17.5	50	35.0	22.5	92
-	55	79.7	160	17.5	50	35.0	22.5	100
2.250	58	82.7	160	17.5	50	35.0	22.5	100
2.375	60	84.7	160	17.5	50	35.0	22.5	100
2.500	63	87.7	180	17.5	50	35.0	22.5	112
-	65	89.7	180	17.5	50	35.0	22.5	112
2.625	68	92.7	180	17.5	50	35.0	22.5	112
2.750	70	94.7	180	17.5	50	35.0	22.5	112
2.875	-	107.8	190	17.5	54.5	38.5	25.5	130
3.000	75	107.8	190	17.5	54.5	38.5	25.5	130
-	80	112.8	220	17.5	54.5	38.5	25.5	135
3.250	-	117.8	220	21.5	54.5	38.5	25.5	140
3.250	85	117.8	220	21.5	54.5	38.5	25.5	140
3.500	90	122.8	220	21.5	54.5	38.5	25.5	145
3.625	-	127.8	220	21.5	54.5	38.5	25.5	150
3.750	95	127.8	220	21.5	54.5	38.5	25.5	150
3.875	100	132.8	240	21.5	54.5	38.5	25.5	155
4.000								

Features

Stationary Design

Monolithic Faces

Cushioned Faces

Springs outside the media

Double Pressure Balanced

Full pressure reversal

Manual venting

Bi-Directional Pumping Device

Barrier fluid guide shroud

Tandem Active